



Portfolio

Packaging Formats



Open Bag



Zipper Bag



Resealable
Flap Bag



Pillow Bag



Quattro Seal Bag



Bar Wrapper



Gusseted Bag



Stand-up Pouch

Fresh Produce Bag TP 302



Applications

- Fresh produce
- Non-food

Technical Data

- Co-extruded high transparency film
- Excellent gloss and clarity
- Available in 35 & 40 μ
- Available with light pigmentation
- Excellent mechanical properties
- Both sides sealable & printable
- COF: Available at 0.2-0.4

Regulatory Features

- Certified as compostable under both industrial (OK Compost EN13432) and home conditions (OK Compost Home)
- Available in 20-30% bio-based

Bag with Zipper TP 302



Applications

- Cereal
- Sandwiches
- Fresh produce
- Grains
- Pharmaceuticals
- Apparel

Technical Data

- Co-extruded high transparency film
- Excellent gloss and clarity
- Available in 35µ and more
- Excellent mechanical properties
- Narrow/wide zippers
- Available in natural or pigmented colors

Regulatory Features

- Certified as compostable under home conditions (OK Compost Home)
- Available in 20-30% bio-based



Resealable Flap Bag TP 302



Applications

- Apparel

Technical Data

- Co-extruded high transparency film
- Excellent gloss and clarity
- Available in 35 μ and more
- Excellent mechanical properties
- Both sides sealable & printable

Regulatory Features

- Film is certified as compostable under both industrial (OK Compost EN13432) and home conditions (OK Compost Home)
- Available in 20-30% bio-based

Flow Wrap Package

TP 302



Applications

- Magazines and newspapers

Technical Data

- Co-extruded high transparency film
- Excellent gloss and clarity
- Available in 20-30 μ
- Excellent mechanical properties
- Both sides sealable & printable

Regulatory Features

- Certified as compostable under both industrial (OK Compost EN13432) and home conditions (OK Compost Home)
- Available in 20-30% bio-based

Stand-Up Pouch

LAM 106



Applications

- Snack food
- Baked goods
- Confectionary
- Cereal
- Food supplements

Technical Data

- Thickness: 65-100 μ
- Metalized laminate
- Reverse printable layer
- OTR – 0.75 (25°C, 0% RH)
- WVTR – 7.5 (38°C, 90% RH)
- Excellent sealing strength

Regulatory Features

- The laminate is certified as compostable under industrial conditions (OK Compost EN13432)
- Up to 65% bio-based

Stand-Up Pouch

LAM 506



Applications

- Snack food
- Baked goods
- Food supplements

Technical Data

- Thickness: 65-100 μ
- Metalized laminate
- Printable on outer layer
- OTR – 0.25 (25°C, 0% RH)
- WVTR – 5.0 (38°C, 90% RH)
- Excellent sealing strength

Regulatory Features

- The laminate is certified as compostable under industrial conditions (OK Compost EN13432)
- Up to 65% bio-based

Stand-Up Pouch

LAM 604



Applications

- Pasta
- Confectionery
- Granola bars
- Muesli
- Granola
- Grains
- Nuts & seeds
- Dried fruit

Technical Data

- 3-ply laminate
- Thickness: 65-100 μ
- Transparent laminate
- Printable
- OTR – 0.5 (25°C, 0% RH)
- WVTR – 7.5 (38°C, 90% RH)
- Excellent sealing strength

Regulatory Features

- The laminate is certified as compostable under industrial conditions (OK Compost EN13432)
- Up to 60% bio-based



Coffee pod bags

Stand-Up Pouch LAM 607



Applications

- Pasta
- Confectionery
- Grains
- Nuts & seeds
- Dried fruit

Technical Data

- 2-ply laminate
- Thickness: 65-100 μ
- Transparent laminate
- Printable
- OTR – 1 (25°C, 0% RH)
- WVTR – 15 (38°C, 90% RH)
- Excellent sealing strength

Regulatory Features

- The laminate is certified as compostable under industrial conditions (OK Compost EN13432)
- Up to 50% bio-based

Gusseted Bag + Valve

LAM 506



Applications

- Whole coffee beans

Technical Data

- Thickness: 80-100 μ
- Metalized laminate
- Printable on outer layer
- OTR – 0.25 (25°C, 0% RH)
- WVTR – 5.0 (38°C, 90% RH)
- Excellent sealing strength

Regulatory Features

- The laminate is certified as compostable under industrial conditions (OK Compost EN13432)
- Up to 65% bio-based

Pillow Bag

LAM 106



Applications

- Snack food
- Food supplements
- Confectionary

Technical Data

- Thickness: 65-100 μ
- Metalized laminate
- Reverse printable layer
- OTR – 0.75 (25°C, 0% RH)
- WVTR – 7.5 (38°C, 90% RH)
- Excellent sealing strength

Regulatory Features

- The laminate is certified as compostable under industrial conditions (OK Compost EN13432)
- Up to 65% bio-based



Granola Bar

Bar Wrapper

LAM 604



Applications

- Granola bars

Technical Data

- 3-ply laminate
- Thickness: 65-100 μ
- Transparent laminate
- Printable
- OTR – 0.5 (25°C, 0% RH)
- WVTR – 7.5 (38°C, 90% RH)
- Excellent sealing strength

Regulatory Features

- The laminate is certified as compostable under industrial conditions (OK Compost EN13432)
- Up to 60% bio-based

Gusseted Window Bag

TP 302



Applications

- Baked goods

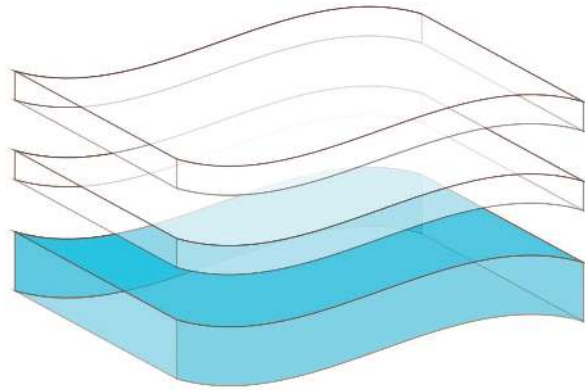
Technical Data

- Co-extruded high transparency film
- Excellent gloss and clarity
- Available at 25-60 μ
- Available with light pigmentation
- Excellent mechanical properties
- Both sides sealable & printable
- COF: Available at 0.2-0.4

Regulatory Features

- Available in 20-30% bio-based

Film & Laminate Rolls



TP 302



Applications

- Fresh produce, fresh bakery, bags, zipper bags, magazine wrapping, non-food, etc.
- For lamination - printing, sealing and body layers

Technical Data

- Co-extruded high transparency film
- Excellent gloss and clarity
- Available at 20-80 μ
- Available with light pigmentation
- Excellent mechanical properties
- Both sides sealable & printable
- COF: Available at 0.2-0.4

Regulatory Features

- Certified as compostable under both industrial (OK Compost EN13432, BPI ASTM D6400) and home conditions (OK Compost Home)
- Available in 20-30% bio-based

LAM 106



Applications

- Snack food
- Baked goods
- Confectionary
- Cereal
- Food supplements

Technical Data

- Thickness: 65-100 μ
- Metalized laminate
- Reverse printable layer
- OTR – 0.75 (25°C, 0% RH)
- WVTR – 7.5 (38°C, 90% RH)
- Excellent sealing strength

Regulatory Features

- Certified as compostable under industrial conditions (OK Compost EN13432)
- Up to 65% bio-based

LAM 506



Applications

- Snack food
- Baked goods
- Food supplements

Technical Data

- Thickness: 65-100 μ
- Metalized laminate
- Printable on outer layer
- OTR – 0.25 (25°C, 0% RH)
- WVTR – 5.0 (38°C, 90% RH)
- Excellent sealing strength

Regulatory Features

- Certified as compostable under industrial conditions (OK Compost EN13432)
- Up to 65% bio-based

LAM 604



TIPA[®]
Sustainable
Packaging

**FULLY
COMPOSTABLE**
Flexible Packaging Materials

Applications

- Confectionery
- Granola bars
- Muesli
- Granola
- Grains
- Nuts & seeds
- Dried fruit
- Pasta

Technical Data

- 3-ply laminate
- Thickness: 65-100 μ
- Transparent laminate
- Printable
- OTR – 0.5 (25°C, 0% RH)
- WVTR – 7.5 (38°C, 90% RH)
- Excellent sealing strength

Regulatory Features

- Certified as compostable under industrial conditions (OK Compost EN13432)
- Up to 60% bio-based

LAM 607



Applications

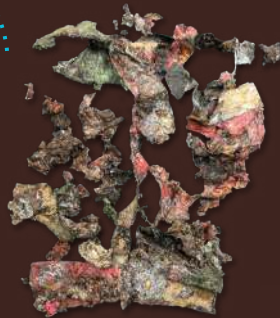
- Pasta
- Confectionery
- Grains
- Nuts & seeds
- Dried fruit

Technical Data

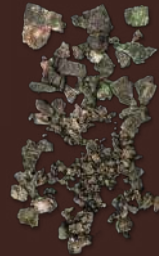
- 2-ply laminate
- Thickness: 45-100 μ
- Transparent laminate
- Printable
- OTR – 1 (25°C, 0% RH)
- WVTR – 15 (38°C, 90% RH)
- Excellent sealing strength

Regulatory Features

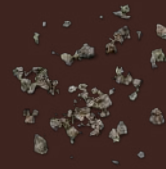
- Certified as compostable under industrial conditions (OK Compost EN13432)
- Up to 50% bio-based



Remains of the package in composting conditions after **4 weeks**



Remains of the package in composting conditions after **8 weeks**



Remains of the package in composting conditions after **11 weeks**

**FULLY
COMPOSTABLE**



TIPA Corp. Ltd www.tipa-corp.com

ISRAEL: 3 Hanagar Hod Hasharon 4501306 P.O BOX 7132 Tel: +972-9-779-6000

USA: Suite 337, 89 Headquarter Plaza North, Morristown, NJ 07960